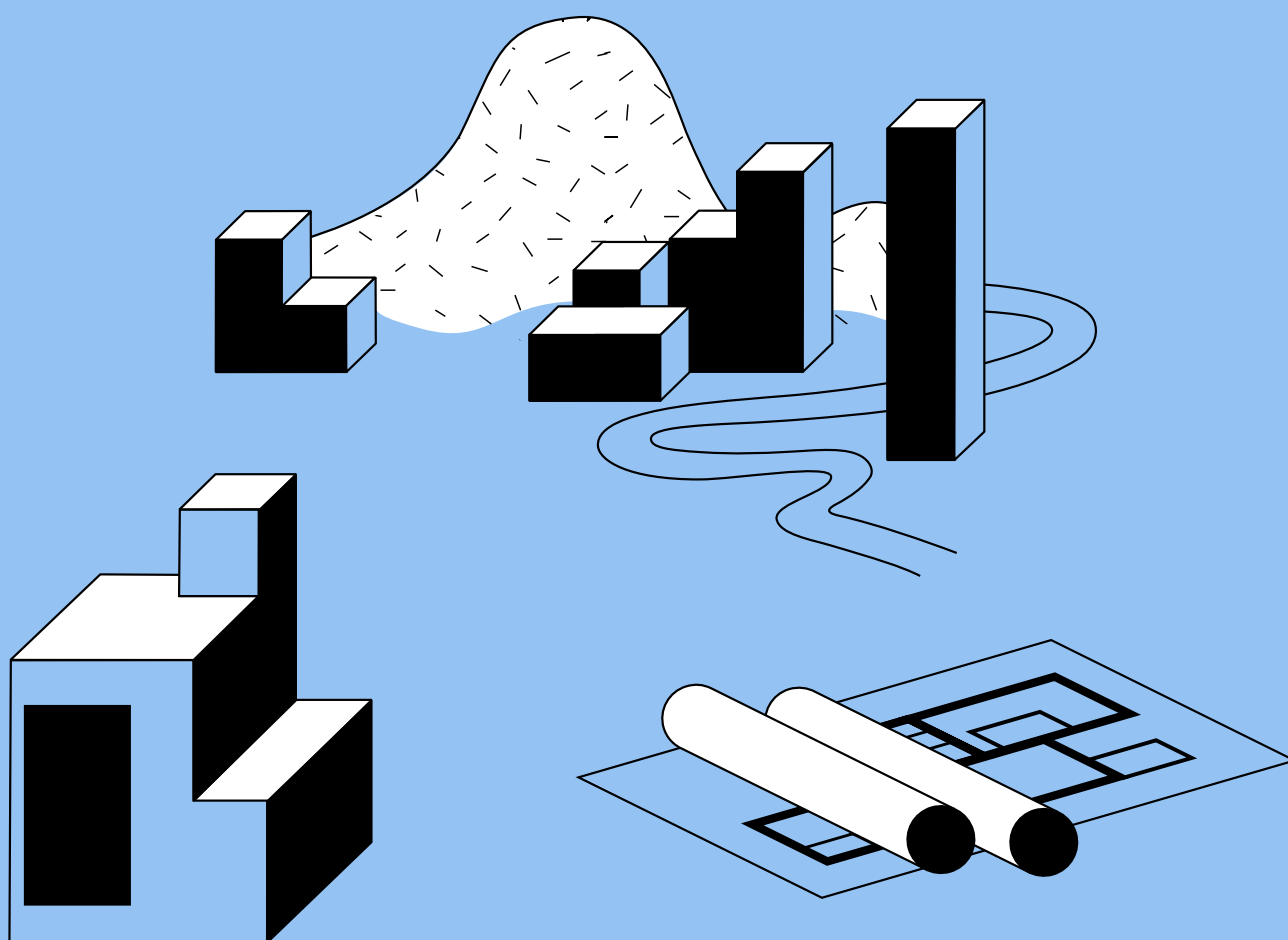


The Davos *Baukultur* Quality System

Assessment form



Davos²⁰¹⁸
Declaration

The Davos *Baukultur* Quality System Assessment form

Please use the free programme Adobe Acrobat Reader to fill out the form.
Latest version: <http://get.adobe.com/reader/>

Name and address of the place

Date of the assessment

Responsible person

Use this comprehensive form provided by the Davos *Baukultur* Quality System to assess the *Baukultur* quality of a place.

To discover the Davos *Baukultur* Quality System, please consult the document Eight criteria for a high-quality *Baukultur*.

Eight criteria for a high-quality *Baukultur*



To access in-depth information about the Davos *Baukultur* Quality System please consult the document Eight criteria for a high-quality *Baukultur* – the whole story.

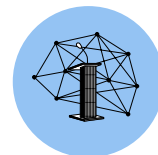
Eight criteria for a high-quality *Baukultur* - the whole story



Useful data for your assessment

- Photos
- Site map
- Plans
- Graphics
- Articles, texts, websites, videos, social media
- Archival and data sources
- Norms, standards
- Certification systems
- ...

Governance



High-quality *Baukultur* follows good Governance.

High-quality *Baukultur* promotes quality-oriented and place-specific processes, led by skilled actors working in teams. It facilitates public engagement and contributes to transparent and inclusive participatory governance for decision-making, management and care for the place.

**Please answer the following questions on the Governance criterion.
The answer should be in text and indicate the foundations on which it is based.**

Are all stakeholders familiar with the *Baukultur* concept and concerned with the quality of the place?

Is there guidance for *Baukultur* and its quality through legal regulation, standards, norms and policies, by financial or procedural incentives?

Is there a broad public debate on the quality of the place, for example through design competitions, reviews or other?

Is the decision-making process about the place participatory, accessible to all people concerned and transparent at all stages?

Do all professional actors and stakeholders involved have the necessary experience, knowledge, skills and expertise for their tasks?

Do professionals work in transdisciplinary teams?

Additional questions and answers:

Please explain to what extent the place fulfils the requirements of high-quality *Baukultur* in the Governance criterion.

To what degree does the place fulfil the quality requirements with regard to the Governance criterion?

Not at all

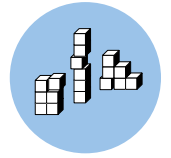
To a small degree

To a moderate degree

To a high degree

To a very high degree

Functionality



High-quality *Baukultur* fits the purpose.

The design and construction methods of high-quality *Baukultur* satisfy the human needs for health, comfort, safety and accessibility. They are enduring and the results adaptable to existing and changing uses and purposes, whilst safeguarding built heritage.

**Please answer the following questions on the Functionality criterion.
The answer should be in text and indicate the foundations on which it is based.**

Does the place fit the purpose now?

Is the place functional over a long period, adaptable to changing conditions, needs and uses, while at the same time preserving its eventual built heritage?

Is the place healthy and comfortable for its users in terms of design, materials, light, air, noise and other?

Is the place safe for its users in terms of design, materials, light and other?

Is the place easily accessible for everyone?

Does the place have low traffic and is it walkable and bikeable?

Additional questions and answers:

Please explain to what extent the place fulfils the requirements of a high-quality *Baukultur* with regard to the Functionality criterion.

To what degree does the place fulfil the quality requirements with regard to the Functionality criterion?

Not at all

To a small degree

To a moderate degree

To a high degree

To a very high degree

Environment



High-quality *Baukultur* protects the Environment.

High-quality *Baukultur* contributes to conserving natural resources and biodiversity, mitigating climate change and thus supporting sustainability. It preserves, promotes and develops an intact natural Environment and diverse cultural and natural landscapes through responsible land use and settlements, sustainable mobility, energy efficiency, use of durable construction materials and methods with regard to the whole life cycle.

Please answer the following questions on the Environment criterion.

The answer should be in text and indicate the foundations on which it is based.

Does the place show responsible land use (e.g. in terms of open spaces, green spaces, appropriate density and occupancy)?

Does the place promote biodiversity (genetic, species and ecosystem diversity)?

Is the place maintained and sustainably developed, with preservation and integration of built heritage?

Does the place feature simple and thus durable construction methods, long-living equipment and adequate maintenance needs, thus implementing the 5 Rs: refuse, reduce, repair, reuse, recycle?

Is the place free of pollutants (e.g. noise, light, products), that are harmful to the Environment and people's health?

Do sufficiency as well as sound and comprehensive scientific analysis and instruments (e.g. environmental impact assessments) influence the decision-making regarding energy efficiency, carbon footprint (e.g. embodied energy) to minimise the impact on the Environment?

Does the place encourage sustainable mobility?

Additional questions and answers:

Please explain to what extent the place fulfils the requirements of a high-quality *Baukultur* with regard to the Environment criterion.

To what degree does the place fulfil the quality requirements with regard to the Environment criterion?

Not at all

To a small degree

To a moderate degree

To a high degree

To a very high degree

Economy



High-quality *Baukultur* adds economic value.

High-quality *Baukultur* prioritises cultural values and long-term investments over short-term economic gain, conserves and increases economic value, and is high value in use. It maintains and develops resources through long-term uses in alignment with the location and the design, Economy of construction and operation, and through the use of high-quality, long-lasting building fabric.

**Please answer the following questions on the Economy criterion.
The answer should be in text and indicate the foundations on which it is based.**

Does the place enhance its long-term attractiveness as a life, working, leisure and/or tourism space by being close to diverse resources, facilities and/or public services?

Do construction materials and methods have a long life cycle thereby reducing maintenance costs, and is the value of the place therefore stable or increasing?

Is the place economically viable over a long-term perspective?

Has best use been made of public and private resources over a long-term perspective against short-term gain, taking into account the costs of the whole life cycle?

Does the Economy of design, construction and operation add to the affordability of the place?

Do ownership and/or investment models of the place contribute to vibrant and mixed-use neighbourhoods?

Additional questions and answers:

Please explain to what extent the place fulfils the requirements of high-quality *Baukultur* with regard to the Economy criterion.

To what degree does the place fulfil the quality requirements with regard to the Economy criterion?

Not at all

To a small degree

To a moderate degree

To a high degree

To a very high degree

Diversity



High-quality *Baukultur* connects people.

High-quality *Baukultur* reflects and promotes inclusive societies and encourages mixed uses, thus facilitating interaction and shared responsibility, which lead to social and spatial cohesion. It contributes to a diverse culture of planning.

**Please answer the following questions on the Diversity criterion.
The answer should be in text and indicate the foundations on which it is based.**

Does the place ensure human rights of equality, freedom, safety and livelihood?

Does the place contribute to vibrant and mixed uses (e.g. housing, working, leisure, etc.) in relation to its characteristics?

Does the place promote and provide diverse attractive and comfortable private and public spaces to connect people?

Does the place promote a mix of users (e.g. by gender, age, ability, origin, etc.) and diverse communities in relation to its functions?

Does the place show shared responsibility for private, but above all public spaces (e.g. through participatory processes, neighbourhood associations, etc.)?

Does the place prevent segregation, gentrification and ghettoisation of specific groups in certain areas?

Is the place socially resilient?

Additional questions and answers:

Please explain to what extent the place fulfils the requirements of high-quality *Baukultur* with regard to the Diversity criterion.

To what degree does the place fulfil the quality requirements with regard to the Diversity criterion?

Not at all

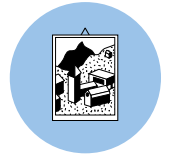
To a small degree

To a moderate degree

To a high degree

To a very high degree

Context



High-quality *Baukultur* results in spatial coherence.

Places of high-quality *Baukultur* refer to their built and natural Context. They embrace built heritage and contemporary creation, and dialogue with local features and their characteristics in terms of age, scale, typology and materiality.

**Please answer the following questions on the Context criterion.
The answer should be in text and indicate the foundations on which it is based.**

Was the Context of the place studied and thoroughly analysed prior to the programming of the intervention?

Does the place dialogue – reflecting small and large-sized characteristics – with the surrounding open landscape, urban grain, colour and materiality?

Are built heritage and regional specificities (e.g. unity of built heritage, existing and contemporary creation and landscape qualities) recognised and preserved, adopted and integrated in all interventions?

Does contemporary creation dialogue respectfully with the features of the Context of a place and does it preserve and enhance the quality of the place?

Does the Context of the place contain green spaces that are easily accessible and does it preserve and enhance the quality of the place?

Additional questions and answers:

Please explain to what extent the place fulfils the requirements of high-quality *Baukultur* with regard to the Context criterion.

To what degree does the place fulfil the quality requirements in the criterion Context?

Not at all

To a small degree

To a moderate degree

To a high degree

To a very high degree

Sense of place



High-quality *Baukultur* improves the Sense of place.

High-quality *Baukultur* shows characteristics that foster people's emotional response to the place establishing a positive relationship with it. It promotes attachment to the place through its strong identity and distinctiveness, thus contributing to fulfilling social, psychological and cultural needs.

**Please answer the following questions on the Sense of place criterion.
The answer should be in text and indicate the foundations on which it is based.**

Is the place set apart by its local character, distinctiveness, authenticity and identity, which promote people's bonding with the place?

Does the place foster place identity, place attachment and thus contribute to a sense of belonging?

Does the place show nature and landscape qualities, enhancing nature and landscape bonding?

Are local and regional values and the history of communities and individuals respected by materiality, design, construction and management of the place and transmitted to future generations?

Is the use compatible with the carrying capacity of the place, maintaining or improving the quality of space as well as the integrity of human life within it?

Does the place contribute to spatial and social cohesion by creating or enhancing opportunities for social interaction, reinforcing a shared vision of its identities and civic pride?

Additional questions and answers:

Please explain to what extent the place fulfils the requirements of high-quality *Baukultur* with regard to the Sense of place criterion.

To what degree does the place fulfil the quality requirements with regard to the Sense of place criterion?

Not at all

To a small degree

To a moderate degree

To a high degree

To a very high degree

Beauty



A place of high-quality *Baukultur* is beautiful.

High-quality *Baukultur* takes into account the sensory perception and understanding of the relationship between objects, spaces and people, increasing people's life satisfaction and quality of life. It emphasises the need for positive aesthetic appreciation and a fulfilling relationship between people and the place.

**Please answer the following questions on the Beauty criterion.
The answer should be in text and indicate the foundations on which it is based.**

Does the place have an aesthetic, spatial and atmospheric impact on the beholder?

Does the place make people feel at ease?

Do people perceive the place as beautiful?

Is the place attributed specific aesthetic values, balanced between its formal qualities and its integration in its complex Context?

Does the place's Beauty contribute to people's well-being and life satisfaction?

Additional questions and answers:

Please explain to what extent the place fulfils the requirements of high-quality *Baukultur* with regard to the Beauty criterion.

To what degree does the place fulfil the quality requirements with regard to the Beauty criterion?

Not at all

To a small degree

To a moderate degree

To a high degree

To a very high degree

Concluding statement

Solidly meeting the conditions of all eight criteria, which can be weighted differently depending on the place with explicit justification, leads to a place of high-quality *Baukultur* and well-being.

Please explain to what extent the place fulfils the requirements of high-quality *Baukultur* overall.

Please explain the overall strengths of the place.

Please explain the potential for improving the place.

To what degree does the place fulfil the quality requirements overall?

Not at all

To a small degree

To a moderate degree

To a high degree

To a very high degree